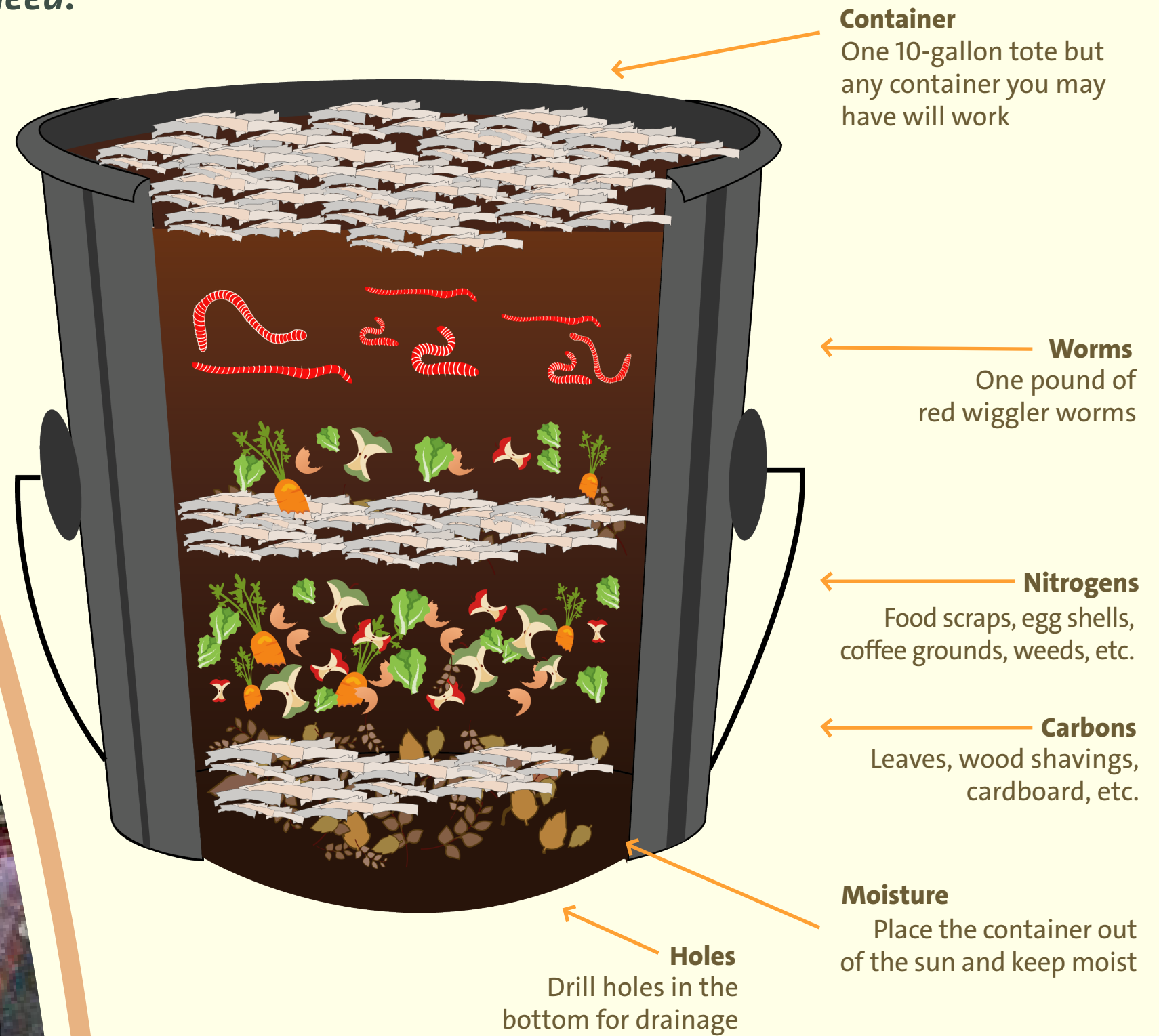


# The Worm Bin

*Vermicomposting scaled for home or office!*

The same red wiggler (*Eisenia fetida*) worms are in this system as the CFT (Continuous Flow Tunnel) and they are eating the same feedstock. This system, however, can be small enough to fit in a closet or deep drawer. Nearly any large tote or tub can be made into a worm bin if you can maintain airflow and moisture.

## What you'll need:



## How can I vermicompost at my house?

If you like caring for animals, this system may be for you! Maintenance is straightforward. These worms are like a pet and need you to provide good ventilation, constant humidity and moisture, regular feeding, and temperatures between 55 to 75°F.

Worms will happily eat your chopped food scraps. Keep a nice thick layer of “brown” bedding, like shredded paper, on top. Remember worms need a balanced ratio of browns to greens just like other systems.

Harvesting worm castings from this system is a little trickier than the CFT, yet in less than an hour you can harvest great fertilizer for your plants!



Learn more online here!

## What do I eat?



## Where can you find me?



## Difficulty level:



seeds  
Ecology & Education Centers