

# The 3-Bin System

*It's all about the temperature!*

The 3-bin system is one of the most traditional and common compost systems. Each bin is used to contain a different stage of the composting process. The process of moving the contents into different bins also helps mix the material and ensure air flow. How much labor is needed depends on the style and construction of your bin system. Having an open face or removable slats will allow for the easiest access to the pile for mixing and turning.



Learn more  
online here!

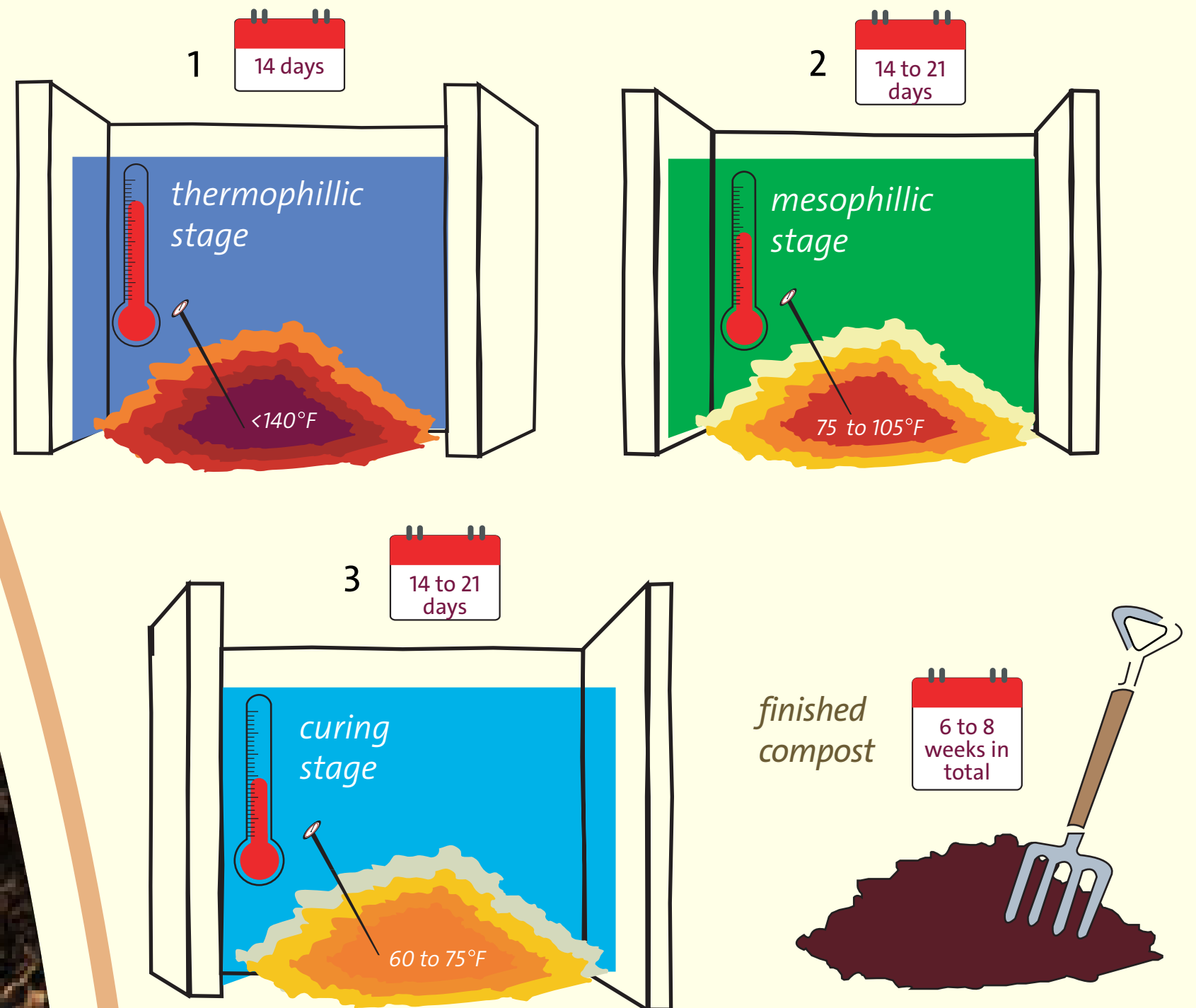
What do I eat?



Where can you find me?



Difficulty level:



## The temperature zone

With the proper mixture of carbon, nitrogen, and oxygen, fresh material will quickly start “cooking,” entering a thermophilic stage with temperatures reaching 140F. This is hot enough to kill pathogens and most weed seeds! During the second stage, the mesophilic stage, temperatures range from 75 to 105F as the organic matter continues to breakdown. Finally, the material cures, continuing to cool down and stabilizing the pH until it’s ready to be used. Refreshing your garden soil with nearly one inch of compost a year grows robust, healthy plants!

thermophilic stage

mesophilic stage

ideal for vegetables & flowers

5 to 6 feet below ground

<140°F

75 to 105°F

60 to 75°F

50 to 60°F



seeds  
Ecology & Education Centers