

The Continuous Flow Tunnel

A modular vermicomposter

This vermicomposter makes collecting worm castings, aka poop, from our red wigglers (*Eisenia fetida*) very efficient. The CFT utilizes a cutting bar to harvest the bottom three inches of worm castings from the vessel while the red wigglers remain undisturbed, continuing to eat their five hearts out! This vessel contains approximately 40,000 worms that can eat 20 pounds of feedstock per week, even including some meat and dairy! Additional CFT tunnels can be connected to expand the system as desired.

Worms have plenty of hearts, but they don't have teeth and prefer their feedstock to be cut up small. Here, we are feeding them the partially composted materials from our other bins, providing the rich, bite-sized portions our worms love to eat while they perfectly finish the compost and offer a remarkably nutrient rich soil amendment.



Learn more
online here!

What do I eat?



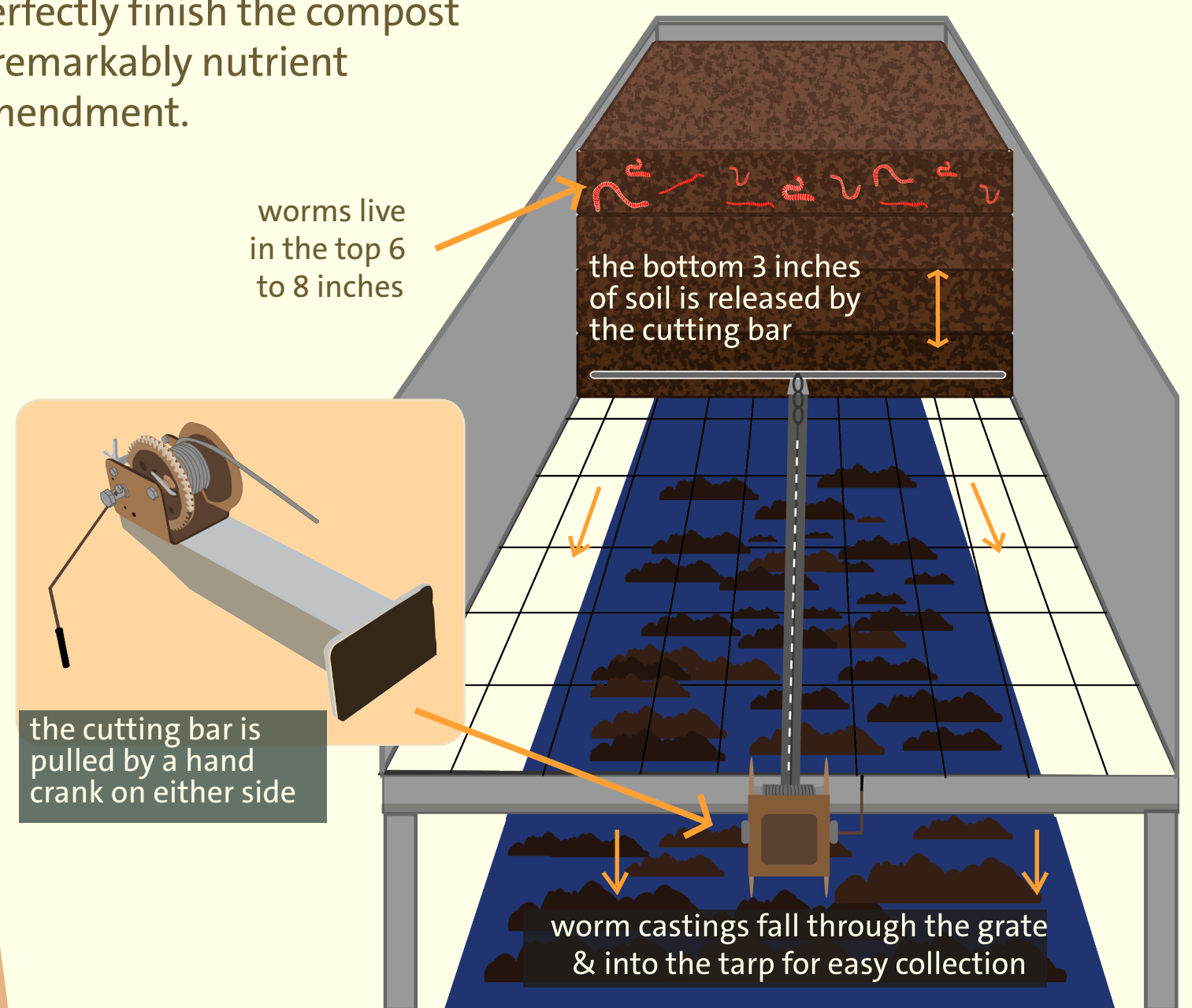
Where can you find me?



Difficulty level:

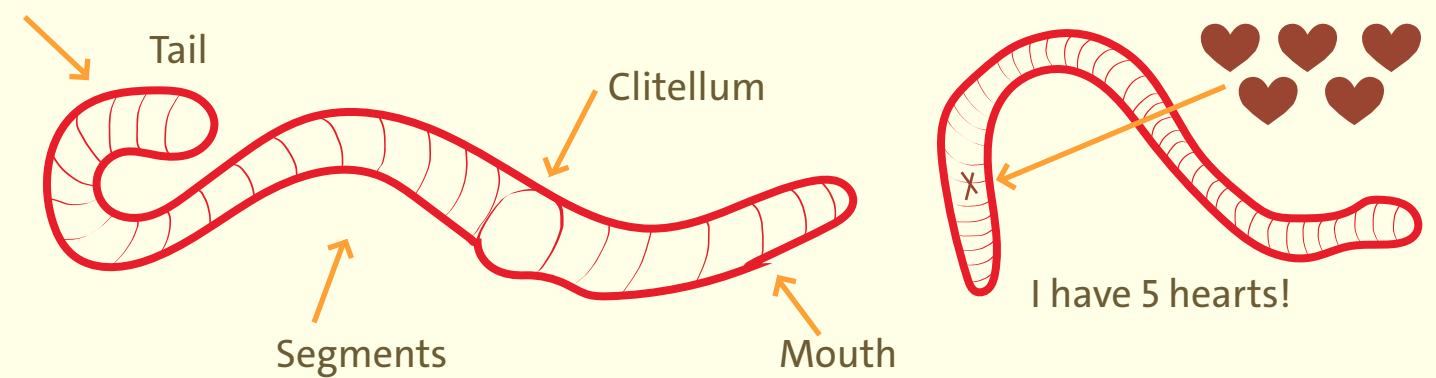


seeds
Ecology & Education Centers

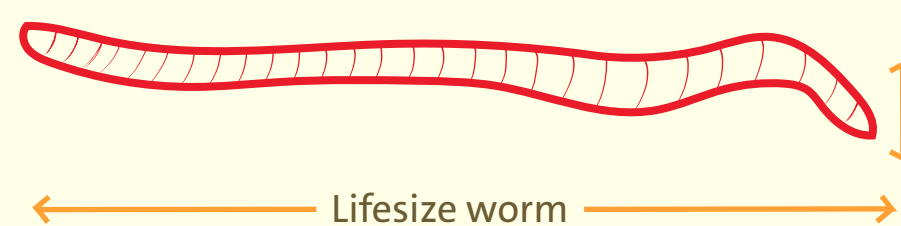


We're all about the wiggle!

Parts of a red wiggler



Dimensions



DID YOU KNOW:
Red wigglers thrive in temperatures between 65 and 80F? Red wigglers need to be protected from freezing temperatures.